



**MAKE IT
COUNT**

Patient Information

A HANDY GUIDE TO YOUR TREATMENT WITH MULPLEO[®] ▼ (LUSUTROMBOPAG)

You have been prescribed Mulpleo for the treatment of your low platelet count (severe thrombocytopenia) with chronic liver disease ahead of your scheduled procedure.

If you would like more information on Mulpleo or your condition, please visit www.makeitcount.eu

This booklet has been designed for use only by patients who have been prescribed Mulpleo.

A Mulpleo package leaflet can be found inside the Mulpleo pack. Please read the complete leaflet carefully.

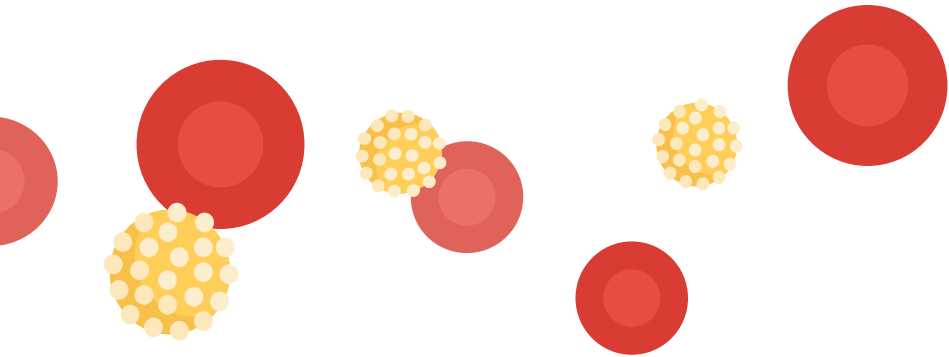
▼ This medicine is subject to additional monitoring. This will allow quick identification of new safety information. You can help by reporting any side-effects you may get.

See <https://yellowcard.mhra.gov.uk/> for how to report side-effects.



GETTING TO GRIPS WITH YOUR MULPLEO TREATMENT

Mupleo is a prescription medicine, which is taken orally to help increase the number of platelets in your blood before a procedure.



WHAT ARE PLATELETS AND WHY ARE THEY IMPORTANT?

When you are cut or hurt, platelets bunch together to form a plug to stop you from bleeding or bruising. They are a type of cell that are made in the *bone marrow* and move around the bloodstream. If your platelet count is low, you may be at a greater risk of bleeding.

Thrombocytopenia is a condition where your blood contains fewer platelets than normal, and this is common in people with chronic liver disease.

WHY HAVE I BEEN PRESCRIBED MULPLEO?

Your healthcare provider has discussed an upcoming procedure with you. Addressing your severe thrombocytopenia helps minimise the risk of bleeding associated with this procedure. Your healthcare provider has therefore recommended that you take a course of Mulpleo to increase the number of platelets in your blood.

HOW DOES MULPLEO WORK?

Mulpleo works by increasing the number of platelets in your blood.

Thrombopoietin is a *hormone* made by the liver, which helps your body to produce platelets. People with chronic liver disease may not make enough thrombopoietin, which can cause their low platelet count.

Usually thrombopoietin attaches to cells in the *bone marrow* causing a series of events resulting in platelets being made. Mulpleo acts like thrombopoietin by attaching to the same cells in the bone marrow and increasing the production of platelets.

Bone marrow – the soft, spongy centre inside your bones where platelets are made.

Hormone – a substance that acts like a messenger molecule in the body.

FITTING MULPLEO INTO YOUR DAILY ROUTINE

HOW SHOULD I TAKE MULPLEO?

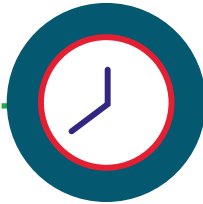
Mupleo comes as a course of 7 tablets, with one tablet taken once a day, with or without food, for 7 days. You will begin taking Mupleo at least 8 days (or more if instructed by your healthcare provider) before you are scheduled for your procedure. Swallow the tablet whole – do not chew, break up or crush the tablet. Your healthcare provider will discuss with you when you should start taking Mupleo treatment.



7 DAYS

Take Mupleo once a day with or without food

DAY 1–7



WAIT 2 DAYS

after your last dose

DAY 9



Your procedure will be performed from

DAY 9 ONWARDS

at the discretion of your healthcare provider

- If you miss a dose, take the missed dose as soon as possible on the same day and return to your normal schedule the following day. Do not take a double dose to make up for a forgotten tablet
- If you take too much Mupleo, call your healthcare provider or go to the nearest Accident and Emergency department as soon as possible. If you are able to, take your Mupleo pack or patient information leaflet with you

WHAT CAN I DO TO BE READY FOR MY PROCEDURE?

Make sure you talk to your healthcare provider about any preparation you need to do before you go in for your procedure. The following checklist includes questions that you can ask your healthcare professional to help you plan ahead:

- How will my procedure be performed?
- Will my procedure require me to be in overnight?
- What can I expect from my recovery (treatment, medication, diet, homecare)?
- Are there any dietary requirements that I will need to consider before my procedure?
- Are there any other treatments I will need to take other than Mupleo?

WHAT IF MY PROCEDURE IS CANCELLED, RESCHEDULED OR POSTPONED?

If your procedure has to be moved to a different day, your healthcare provider will discuss with you how best to manage your thrombocytopenia. Mupleo increases the number of platelets to a level which is suitable for a procedure by a median of 20.9 days (median means the middle of the group that was studied, so you could experience a shorter or longer period personally). Therefore, your healthcare provider will assess whether or not you require any additional treatment.

WHAT IF I NEED A PROCEDURE IN THE FUTURE?

If you have to undergo a procedure, your healthcare provider will assess your individual bleeding risk and may recommend a treatment to help minimise your risk of bleeding if necessary. Therefore, it is important to let your healthcare provider know of any procedures you have booked, such as a tooth extraction at the dentist, so that they can give you appropriate guidance.

You should always inform any healthcare provider you meet of the following:

- I have a low platelet condition, called thrombocytopenia
- I have been treated for low platelets in the past

IMPORTANT SAFETY INFORMATION

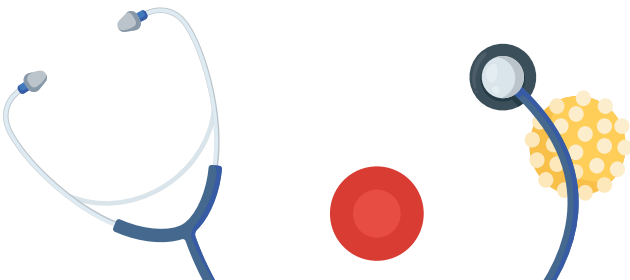
WHAT SHOULD I WATCH OUT FOR WITH MY MULPLEO TREATMENT?

Before taking Mulpleo you should tell your healthcare provider about all of your medical conditions, including:

- Any allergies, especially if you have any known reactions to treatments which increase platelet production. Please speak to your healthcare provider if you are unsure
- If you are at risk of blood clots in your veins or arteries or if you have previously had blood clots
- If you have severe liver disease
- If your spleen has been removed
- If you are having interferon treatment
- Pregnancy or planning to become pregnant
- Breastfeeding or planning to breastfeed

You should also tell your healthcare provider about all medicines you take, including prescription medicines, over-the-counter medicines, vitamins and herbal supplements.

It is important to note that some patients will still require platelet transfusions despite having taken Mulpleo. This is something you can ask your healthcare provider for more information on.



WHAT SIDE-EFFECTS SHOULD I TELL MY HEALTHCARE PROVIDER ABOUT?

You should always tell your healthcare provider about any side-effects that you experience whilst taking a newly prescribed medicine. This will help doctors identify any new side-effects promptly and will help your healthcare provider adjust your treatment, if they think that is best for you.

The most common side-effect of taking Mulpleo is headaches.

Other common side-effects include nausea, blood clot in the liver and rash. However, these are not the only possible side-effects of taking Mulpleo. Mulpleo may cause serious side-effects, including blood clots. The signs of a blood clot include:

- Swelling, pain, heat, redness, or tenderness in your leg
- Sudden shortness of breath, especially with sharp pain in the chest or rapid breathing
- Pain in the tummy, swollen tummy or blood in your stools

If you notice any of these you should get immediate medical assistance. You may be at an increased risk of developing blood clots if you have certain blood clotting conditions. If you get any side-effects, talk to your healthcare provider. This includes any side-effect not listed in the package leaflet.

This medicine is subject to additional monitoring. This will allow quick identification of new safety information. You can help provide more information on the safety of this medicine by reporting any side-effects you may get.

See www.yellowcard.mhra.gov.uk for how to report side-effects.

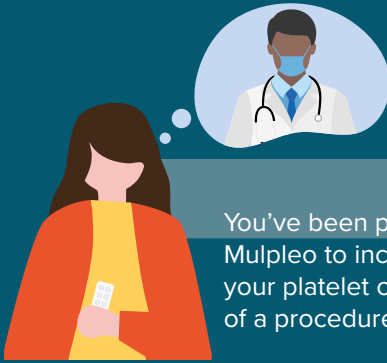
▼This medicine is subject to additional monitoring.
This will allow quick identification of new safety information.
You can help by reporting any side-effects you may get.
See <https://yellowcard.mhra.gov.uk/> for how to report side-effects.

References: • Mulpleo Summary of Product Characteristics • Mulpleo Patient Information Leaflet (PIL)
• Peck-Radosavljevic M. *Liver Int.* 2017;37(6):778-793. • Brown RS, Imawari M, Izumi N, *et al.* Lusutrombopag is a safe and efficacious treatment option for thrombocytopenia in subjects with chronic liver disease undergoing invasive procedures: A pooled analysis of two Phase III trials. Poster presented at AASLD 2018(2) [P #2016]



A SUMMARY OF YOUR MULPLEO TREATMENT

**MAKE IT
COUNT**



You've been prescribed Mulpleo to increase your platelet count ahead of a procedure

Mulpleo is an oral tablet, to be swallowed whole once a day, with or without food



You need to take Mulpleo for 7 days



You then need to wait at least 2 days after your last dose



Your procedure will be performed from day 9 onwards, at the discretion of your healthcare provider

If you would like more information on Mulpleo or your condition, please visit www.makeitcount.eu

Medical information email: contact@shionogi.eu